

Funding Opportunities at the National Science Foundation



White House Summit on Historically Black Colleges and Universities

Federal Agency Panel

September 18, 2017

Claudia Rankins, Program Director, HBCU-UP, NSF
Former Dean, School of Science, Hampton University



Historically Black Colleges and Universities

- Many Historically Black Colleges and Universities (HBCUs) were founded in the late 1800s, at a time when almost all colleges and universities were exclusively for men, and access to higher education for women was minimal. However, because of their unique missions, HBCUs, dating back to their origins, were open and accessible to women and people, such as American Indians, to whom other institutions were not open.
- HBCUs were and are at the forefront of social justice and change.
- HBCUs provide a positive educational environment for students to succeed.
- HBCUs comprise about 3% of the Nation's institutions of higher learning and in 2014 enrolled about 9% of African American undergraduate students.
- In 2014, HBCUs graduated about 18% of African American recipients of STEM BS degrees.
- In the Fall of 2017, many HBCUs experienced a record enrollment of freshmen.

About the National Science Foundation



- The National Science Foundation (NSF) is an independent federal agency created by Congress in 1950 "to promote the progress of science; to advance the national health, prosperity, and welfare; to secure the national defense..."
- With an annual budget of \$7.5 billion (FY 2017), we are the funding source for approximately 24 percent of all federally supported basic research conducted by America's colleges and universities. In many fields such as mathematics, computer science and the social sciences, NSF is the major source of federal backing



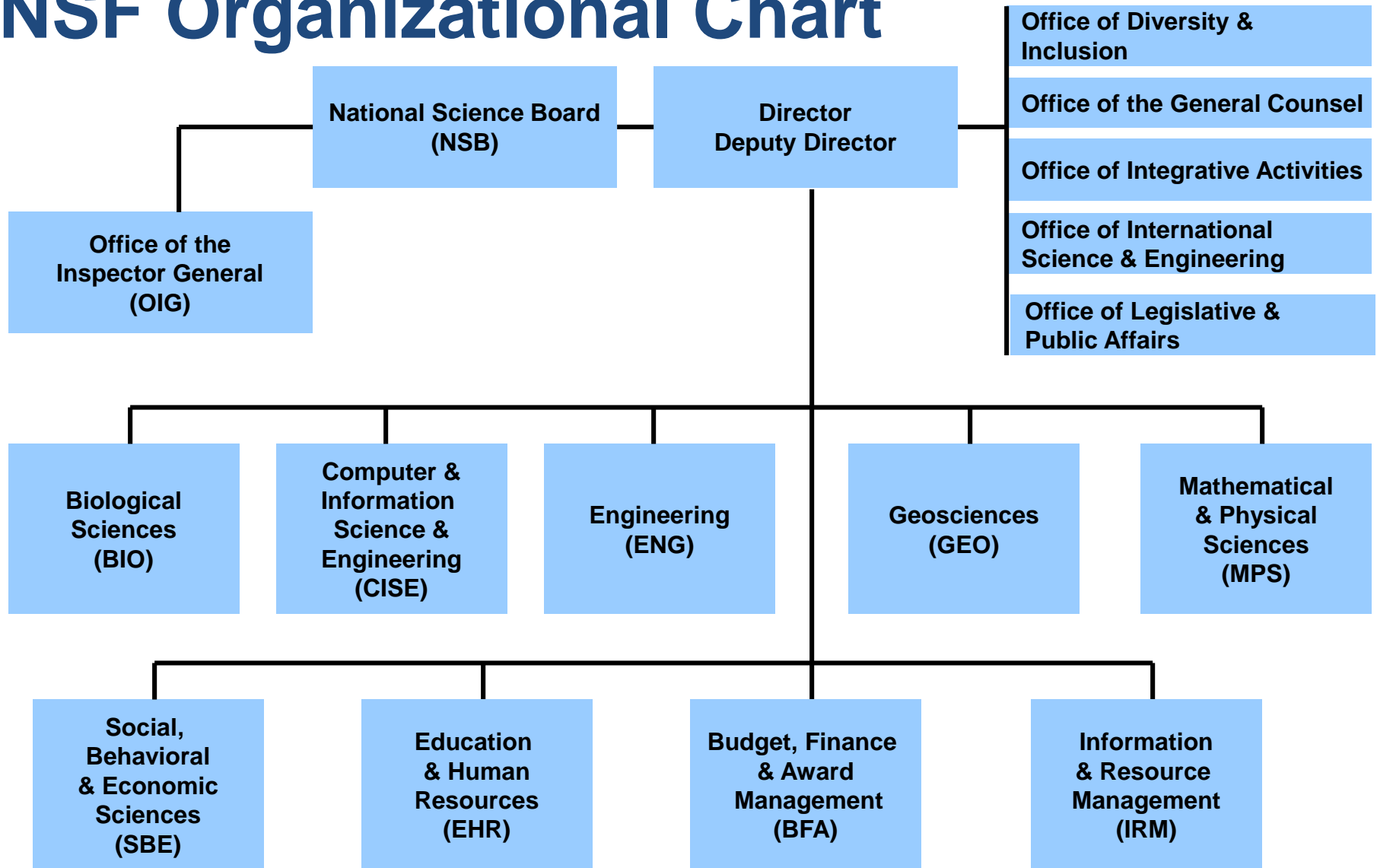
About the National Science Foundation



- NSF is the only federal agency whose mission includes support for all fields of fundamental science and engineering, except for medical sciences.
- NSF ensures that research is fully integrated with education so that today's revolutionary work will also be training tomorrow's top scientists and engineers.
- Proposals are submitted to more than 300 programs across NSF.
- Each year NSF receives more than 42,000 proposals and makes about 11,000 awards.



NSF Organizational Chart



NSF Merit Review Criteria

All proposals submitted to NSF must address the following merit review criteria:

The **Intellectual Merit** criterion encompasses the potential to advance knowledge; and

The **Broader Impacts** criterion encompasses the potential to benefit society and contribute to the achievement of specific, desired societal outcomes.

Review Elements

The following elements should be considered in the review for **both criteria**:

1. What is the potential for the proposed activity to:
 - a. advance knowledge and understanding within its own field or across different fields (Intellectual Merit); and
 - b. benefit society or advance desired societal outcomes (Broader Impacts)?
2. To what extent do the proposed activities suggest and explore creative, original, or potentially transformative concepts?
3. Is the plan for carrying out the proposed activities well-reasoned, well-organized, and based on a sound rationale? Does the plan incorporate a mechanism to assess success?
4. How well qualified is the individual, team, or institution to conduct the proposed activities?
5. Are there adequate resources available to the PI (either at the home institution or through collaborations) to carry out the proposed activities?



Types of Funding Opportunities

- **Program Description**
 - Published only on the NSF website.
 - Proposals must follow PAPPG (Proposal and Award Policies and Procedures Guide) instructions.
- **Program Announcement**
 - Published NSF document describing the program.
 - Proposals must follow PAPPG instructions.
- **Program Solicitation**
 - Published document with additional restrictions and/or requirements.
 - Proposals must follow both the solicitation and the PAPPG instructions
- **Dear Colleague Letter**
 - Notifications of opportunities or special competitions for supplements to existing NSF awards.



A Few NSF Programs Pertinent to ALL HBCUs Regardless of Size or Research Capacity

- HBCU-Undergraduate Program
- Improving Undergraduate STEM Education
- Advancing Technological Education (for community colleges)
- NSF Scholarships in Science, Technology Engineering and Mathematics
- Robert Noyce Teacher Scholarship Program
- Cybercorps: Scholarship for Service
- Graduate Research Fellowship Program (for students)
- EHR Core Research
- NSF INCLUDES – Congrats to Delaware State, Tuskegee and NCA&T State Universities
- And many more too numerous to list



What Can You Do?

- Provide faculty with adequate resources to write competitive proposals and after they get funded to carry out the proposed activities.
- Assure faculty have access to NSF program directors.
- Allow faculty to travel to participate in NSF review panels and on external committees.
- Foster an atmosphere among faculty that is conducive to grantsmanship and research.

Contact Information

- www.nsf.gov
- Subscribe to National Science Foundation Update
<https://public.govdelivery.com/accounts/USNSF/subscriber/new?qsp=823>
- Claudia Rankins crankins@nsf.gov
- Sylvia James sjames@nsf.gov