



Benjamin A. Gilman International Scholarship Program

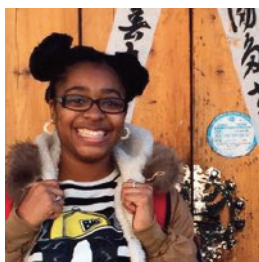
FAST FACTS 2015-16

MISSION

The intent of the Gilman International Scholarship Program is to broaden the U.S. student population that participates in study abroad by supporting those students who would not otherwise study outside the U.S. due to financial constraints.

IMPACT

The Gilman Program provides scholarships to enable U.S. undergraduate students of limited financial means to pursue credit-bearing academic studies or internships abroad. Such foreign study expands the understanding of other countries and cultures among U.S. students, thereby better preparing them to assume significant roles in an increasingly global economy and society. Since the program's inception in 2001, over 22,000 bright, ambitious, and diverse American students have received a Gilman Scholarship to study or intern in more than 140 countries and hail from over 1,200 universities across the nation. The Gilman Program engages with public and private-sector partners to increase participation.



MULTIPLIER EFFECT:

46%

Were first-generation college students

87%

Were the first in their family to study abroad

15%

Participated in career oriented experiences

REACHES DIVERSE STUDENTS AT OVER 1,000 U.S. INSTITUTIONS IN ALL 50 STATES, INCLUDING:

- Federal Pell Grant Recipients
- Ethnic Minority Students
- Students with Disabilities
- First-Generation College Students
- Community College Students

REACHES A WIDE VARIETY OF U.S. INSTITUTIONS IN ALL 50 STATES:

- Historically Black Colleges / Universities
- Hispanic-Serving Institutions
- Minority-Serving Institutions
- Community Colleges
- Tribal Colleges



ENCOURAGES STUDY IN DIVERSE DESTINATIONS AND LANGUAGES:

74%

Studied in non-traditional locations

70%

Studied a language, 50% of which were Critical Need Languages



DEMAND FOR SCHOLARSHIP:

10,000+

Scholarship applications received annually

2,800+

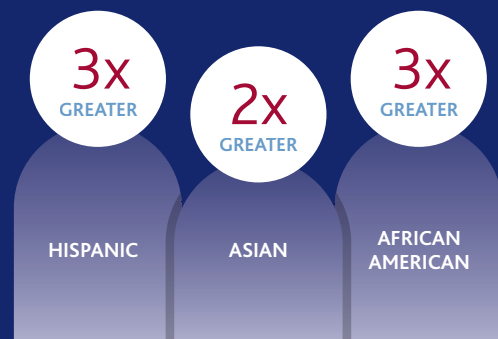
Scholarships awarded each year

71%

Would not have been able to study abroad without the scholarship



PARTICIPANTS ARE MORE DIVERSE THAN THE NATIONAL STUDY ABROAD POPULATION:



“Intercultural experiences allow us to examine our ways of thinking from perspectives we don’t have access to every day. These perspectives are very valuable for any job we have in the future.”

Gilman Scholar to Indonesia

